

US 26: Shute Road Interchange

The US 26 Shute Road interchange is a locally and regionally significant interchange along the US 26 Sunset Corridor. This interchange is a major entry point to regionally significant high-tech employment centers based in the northern portion of the City of Hillsboro. The transportation challenge in this area is heavy traffic from the westbound US 26 off-ramp to southbound Shute Road during morning peak hours, and heavy traffic northbound on Shute Road to eastbound US 26 during afternoon peak hours.

Metro's recent addition of the Evergreen and Helvetia planning areas into the Urban Growth Boundary (UGB) is intended to bring approximately 850 acres of land for industrial development projected to employ 13,000 people. The primary focus of land-use in the area is to provide sustainable "green energy" jobs.

The existing interchange capacity cannot accommodate build-out of the recent UGB expansion and may impact the development potential of state-certified industrial sites and recently re-zoned high-tech industrial lands in the area without improvements.

Project Location
Hillsboro/Washington
County

Benefits

- Access to industrial lands
- Congestion reduction
- Safety
- Economic development

Project Cost

The Oregon Legislature provided \$45 million for Phase 1 of the project.

Project Milestones

- Project scope defined: February 2010



The US 26 - Shute Road Interchange serves the City of Hillsboro and surrounding areas of Washington County. This project would provide congestion relief and improve access to developing industrial lands.

US 26: Shute Road Interchange

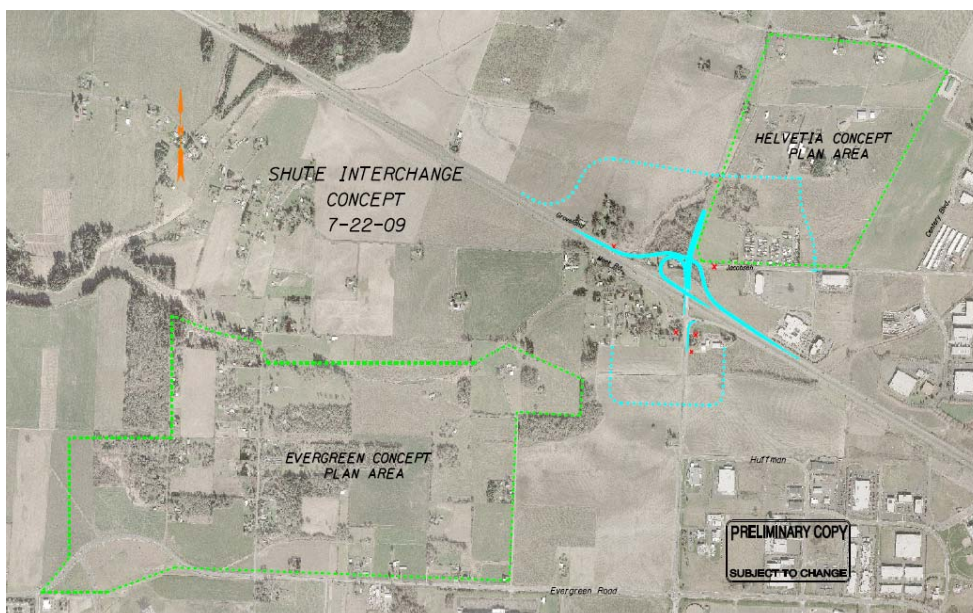
Planning efforts have identified approximately \$70 million worth of transportation improvements to provide additional capacity, improve safety and access, and to relocate existing local facilities to better accommodate the long-term function of the interchange.

ODOT is working with our local partners to define the most appropriate \$45 million Phase 1 option by focusing on safety and freight mobility, and providing capacity for development and employment.

Elements under consideration include:

- A new westbound US 26 to southbound Shute Road exit loop ramp
- Reconstructing the westbound entrance ramp
- Relocating Jacobsen Road
- Providing an additional northbound travel lane on the Shute Road overcrossing
- Extending the northbound right-turn lane from Shute Road

ODOT is developing a TIGER grant application to fund elements of the plan that are not included in Phase 1 of this project.



The proposed US 26 at Shute Road Interchange concept and surrounding industrial expansions.