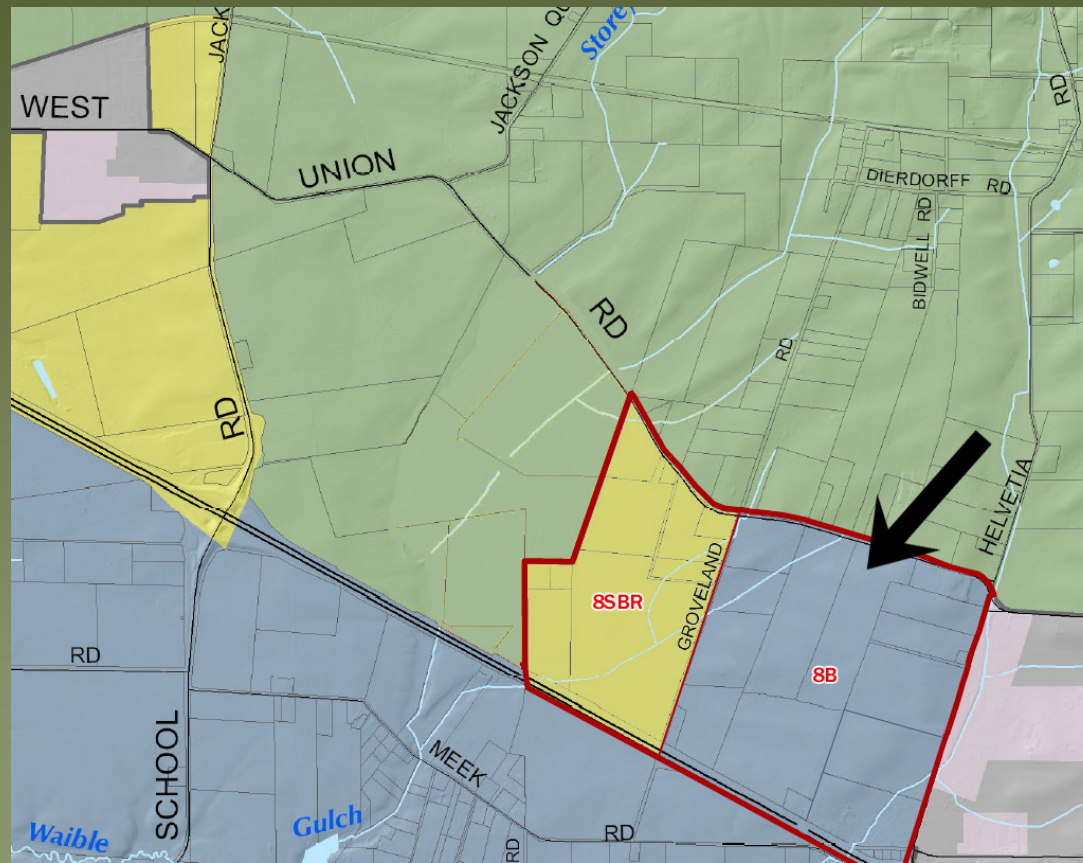


Protecting Washington County's Remaining Class I Soils: Area 8B



Greg Mecklem • 12995 NW Bishop Rd. • Hillsboro, OR 97124
August 18, 2011

Helvetia Area 8B Soils



Class I Willamette Silt Loam, Area 8B

- Foundation Agriculture Land (ODA)
- "The best of the best" (ODA)
- 28% Class 1 (USDA NRCS*)
- Non-irrigated Class I and II is "High-value" farmland (ORS.215.710(1)(b))


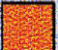



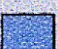
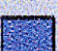


* NRCS, the Natural Resource Conservation Service, is an agency of USDA.

Soil Capability Classes

USDA Natural Resource Conservation Service

Legend

Nonirrigated Capability Class

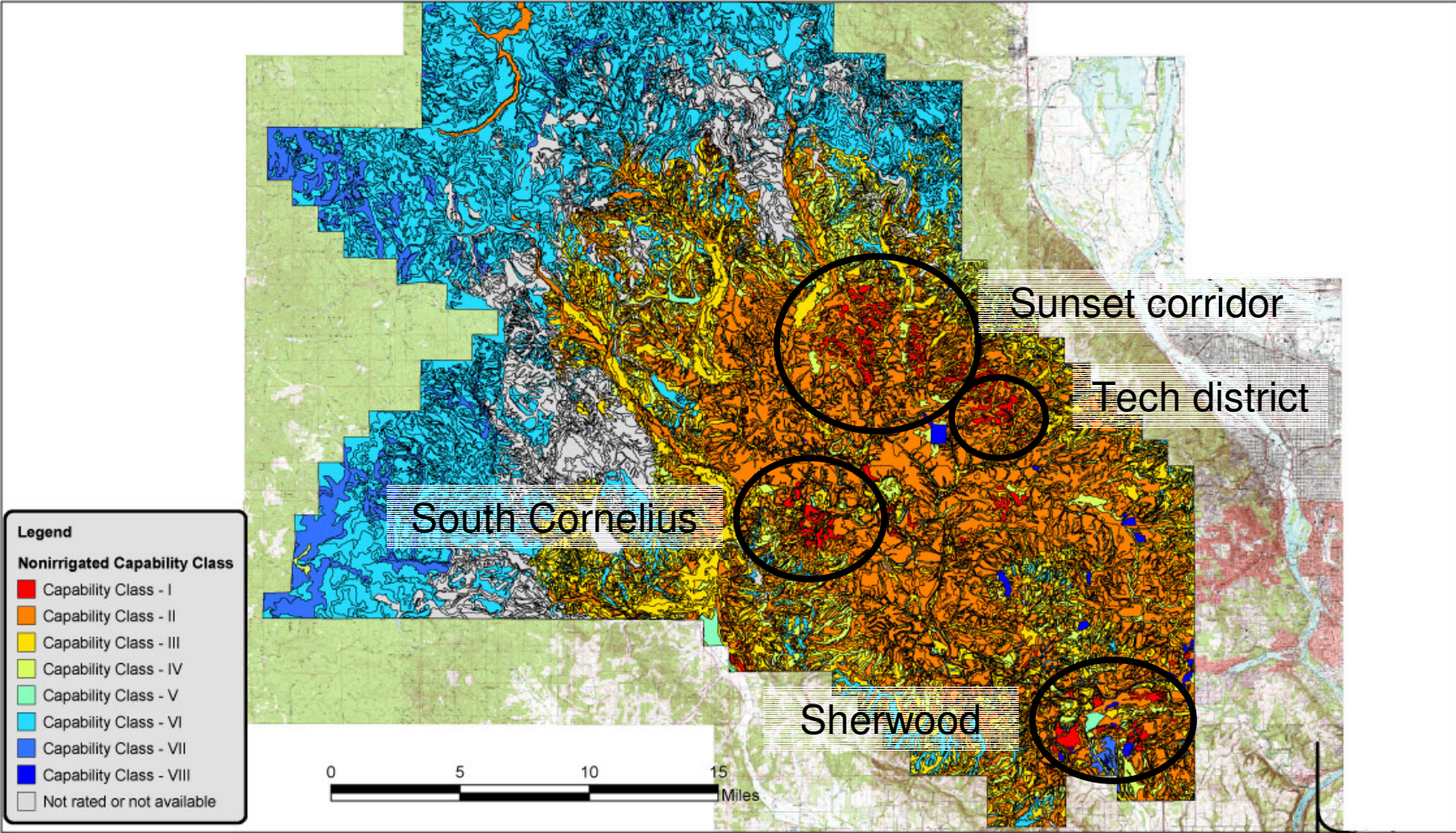
-  Capability Class - I
-  Capability Class - II
-  Capability Class - III
-  Capability Class - IV
-  Capability Class - V
-  Capability Class - VI
-  Capability Class - VII
-  Capability Class - VIII
-  Not rated or not available

- Essential to protect Class I soils – few limitations on productivity
- Class I soils are highest capability regardless of irrigation
- High-value soils are Class I – II
- High-value crops grown without irrigation: wheat and grain crops, clover, grass seed, hay, and filberts
- NRCS data used in ODA Report (and by Clackamas and Multnomah Counties)
- NRCS online database is updated frequently – most recently 2010

Original 4 areas of Class I soils

Washington County Soils by nonirrigated capability class

Assisted By: Nathan P. Adelman
USDA-NRCS
08 March 2011

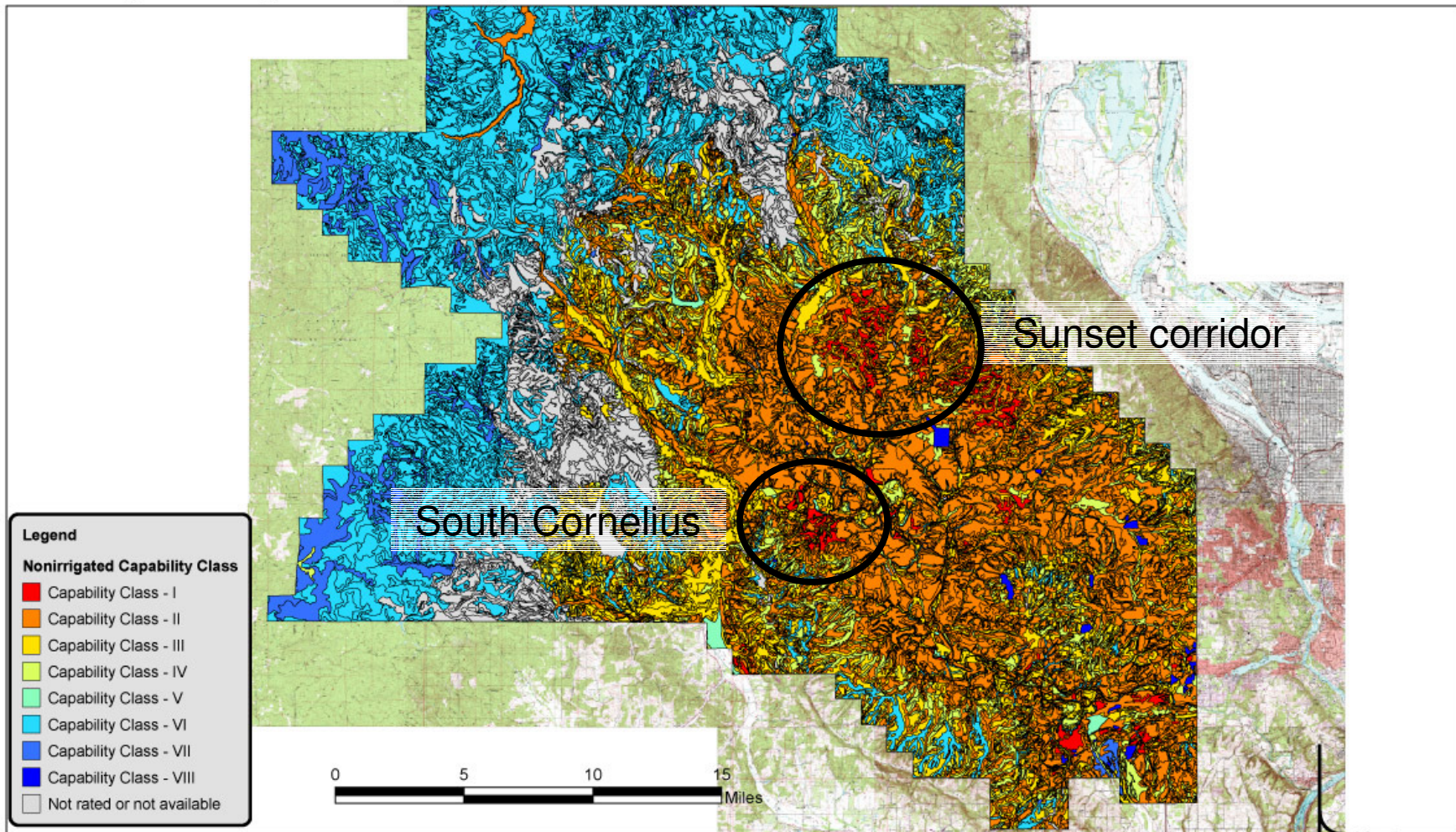


This map is for general planning purposes only.

Remaining areas of Class I soils

Washington County Soils by nonirrigated capability class

Assisted By: Nathan P. Adelman
USDA-NRCS
08 March 2011

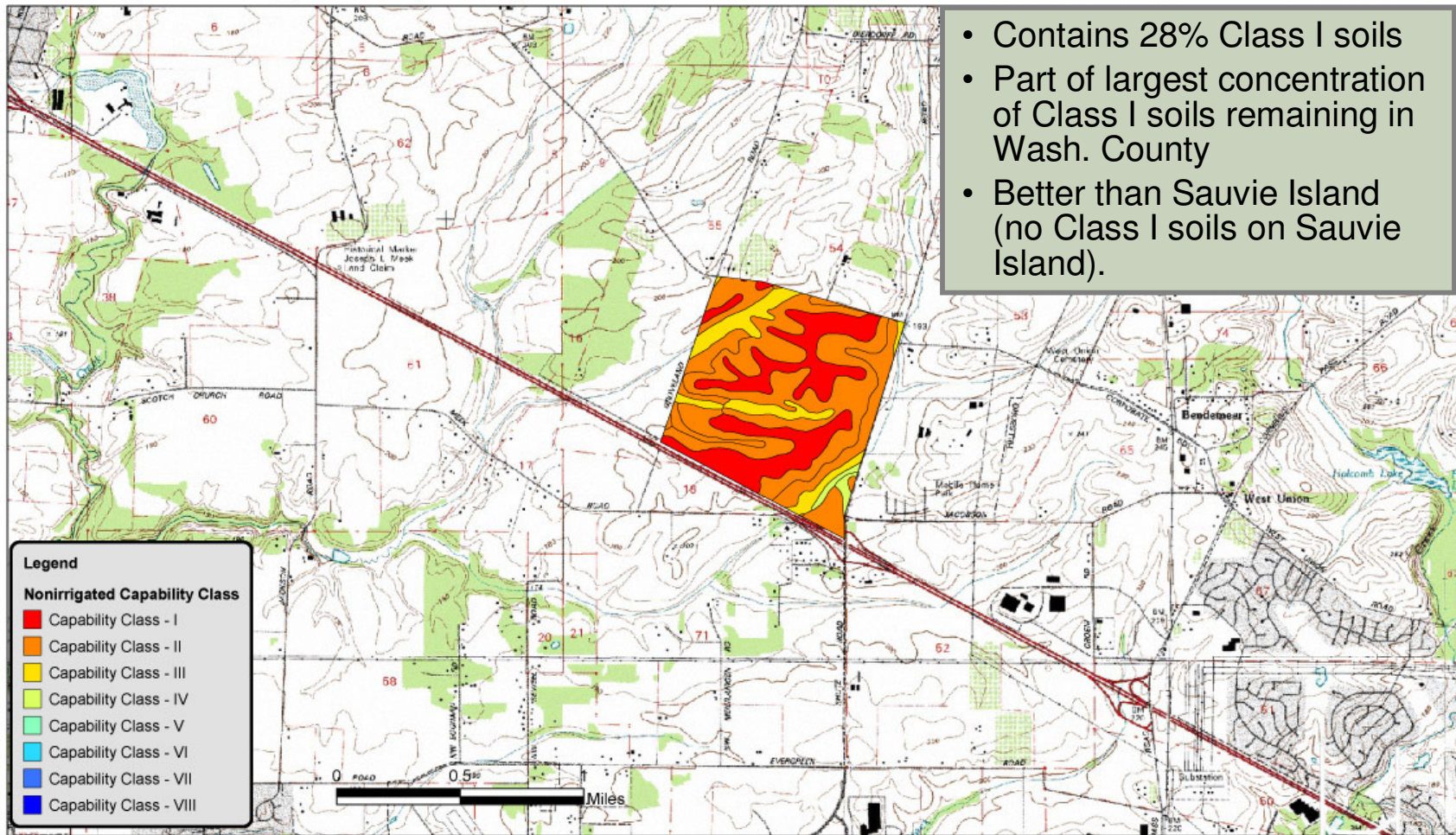


This map is for general planning purposes only.

Proposed Urban Reserves – Area 8B

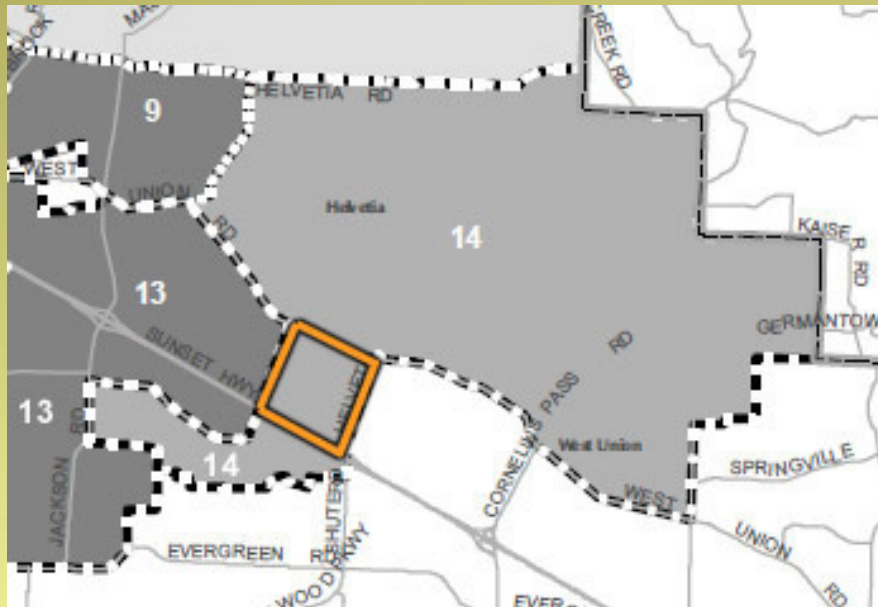
Proposed UR D/8B Soils by Non-irrigated capability class

Assisted By: Nathan P. Adelman
USDA-NRCS
08 March 2011



This map is for general planning purposes only.

WaCo's Area 8B Analysis Is Flawed



- WaCo lumped 8B into huge area of 7,000+ acres
 - Sub-areas 9, 13, 14 skews the soil data on 8B's 440 acres
 - Area 8B should have been analyzed alone
-
- **FLAW:** 8B's high concentration of Class I soils downgraded because of dissimilar soils in larger area, especially along the hilly northeast border of sub-area 14
 - **Consequence:** Area 8B received lower rating for rural reserves (Tier 3)

WaCo Used Outdated Huddleston Report

- WaCo rejected 3 methodologies for soil analysis:
 - ODA Ag Lands Inventory
 - USDA NRCS Soil Classifications
 - High-value farm (LCDC)
- WaCo chose to use Huddleston Report
 - Higher weight on irrigated soil
 - Old data on crop production (1976)
- "If [Huddleston] soil maps are wrong, then the productivity rating will be wrong" –WaCo Record p. 662

Area 8B Soils: Conclusions



Class I Willamette Silt Loam, Area 8B

- WaCo's soils analysis is flawed
- Class I is the best
- Area 8B is 28% Class I
- There isn't much left
- Let's save what we have

Recommend remanding Area 8B for redesignation as Rural Reserves